



sales@ervinsa.com

877-873-6863



PureBlue™

REFRIGERATED
TRAILER

STOUGHTON®

**MADE
IN THE USA** 





PureBlue™ 18.2% MORE THERMALLY EFFICIENT.

From the highly engineered sidewalls and galvanized steel components to a strong durable floor, Stoughton® has left no stone unturned to design a refrigerated trailer that is thermally efficient, lightweight, safe and long lasting — PureBlue™.

3rd Party Testing Confirms Its Superior Performance.

PureBlue has been independently tested and proven to outperform competitor units across key performance metrics. On average, it is **18.2% more thermally efficient**, helping keep cargo colder for longer periods while potentially **reducing annual fuel costs by up to \$910**. Its **design is 27.7% more airtight** on average than all competitor units tested, minimizing temperature fluctuations and extending the life of the refrigeration system. In addition, PureBlue is **built lighter than most competitor models**, allowing for greater payload capacity and boosting overall profitability. With these advantages, PureBlue delivers superior protection, efficiency and economic value for your fleet.

Proven independent 3rd party testing by Element Materials Technology, Huntsville, Ala. A2LA Certified. The recognized leader in Testing, Inspection and Certification Services. Product testing conforms to TTMA RP38 protocols.

GALVANIZED STEEL COMPONENTS

Through our on-premise partnership with a captive galvanizer, every trailer is built with maximum corrosion protection. Our standard spec includes a fully galvanized coupler with a patented kingpin process, plus galvanized coverage across the landing gear bracing, refrigeration unit frame, RIG and rear frame.

REFRIGERATION UNIT MOUNTING FRAME

PureBlue is equipped with a lightweight, high-strength, galvanized refrigeration unit mounting frame, which accepts all refrigeration unit types and manufacturers. The frame is thermally isolated from the cargo space, inhibiting the heat generated by the refrigeration unit from transferring into the trailers.

PRECISE FOAMING PROCESS

We use platen presses in all our foaming processes to create optimum panel flatness and volume control. All our sidewalls are foamed with a CNC controlled single shot pour to create the most uniform foam quality possible.

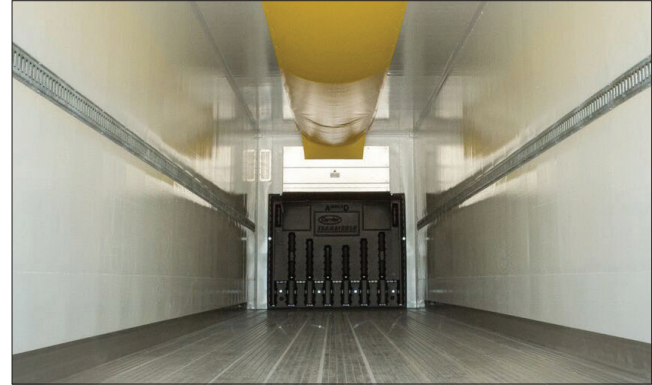
BONDED SIDEWALL POSTS

High-performance structural adhesive tapes bond every sidewall post to the exterior panels between seams, eliminating hundreds of rivets and potential leak points. This not only reduces heat transfer into the temperature-controlled interior but also creates a cleaner, smoother surface ideal for graphics applications.

ALUMINUM CROSS MEMBERS

The optional 5.25-inch extruded-aluminum cross members provide maximum support in the bay area for a strong yet lightweight floor.

IT'S IN THE DETAILS



ENGINEERED MATERIALS

PureBlue is built with zero wood—only engineered materials inside the insulation space that will never rot. Every component is purpose-designed and rigorously tested to meet the structural demands of the application.

DUAL SIDEWALL SCUFF GUARDS

The rivet-free 2-inch aluminum floor flashing and 8-inch integral scuff liner protects the sidewall from damage during loading and unloading.

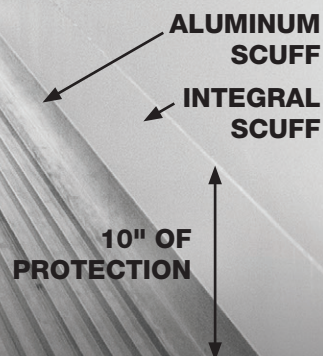
FULLY ENCLOSED FLOOR DESIGN

The extruded aluminum heavy-duty duct floor provides optimum support for your loads even in high-use areas. The fully enclosed design has a knurled edge top surface for skid resistance. There's no wood in the entire structure, which increases the life of the trailer.

OPTIONAL FLAT FLOOR (GROCERY SPEC)



STANDARD HEAVY-DUTY NON-SKID DUCT FLOOR



Floor Type	Standard	Optional
Duct Floor	16K lbs.	20K lbs.
Flat Floor	18K lbs.	20K lbs.

SIGNED, SEALED AND DELIVERED

REAR DOOR

The simple, high-strength design of the rear door optimizes thermal efficiency and reduces weight. Fewer parts and no fasteners simplify repair.

REAR UNDERRIDE GUARD

The new rear underride guard comes standard with no additional cost and weight. It resists compartmental intrusion of an automobile when the location of impact is at 30% to 100% overlap of the width of the car to the guard. It complies with all applicable U.S. and Canadian regulations. The bolt-on design allows for easy reparability.

REAR OPTIONS

Available options include rollup rear door and stainless steel rear frame.

TRIPLE WIPER DOOR SEALS

PureBlue's exclusive triple-wiper door seal delivers the most airtight closure in the industry. Unlike traditional compression gaskets that take a permanent set and lose effectiveness, our seal retains its shape and its ability to recover, ensuring a consistent, reliable seal over time. Air loss testing proves its superior performance.

LIGHTEST SLIDER SUSPENSION

PureBlue comes standard with the lightest slider system in the industry, the Hendrickson ULTRAA-K® axle suspension system. Its optimized strength-to-weight ratio makes it the choice for weight conscious fleets.

ULTRAA-K® is a registered trademark of Hendrickson International.





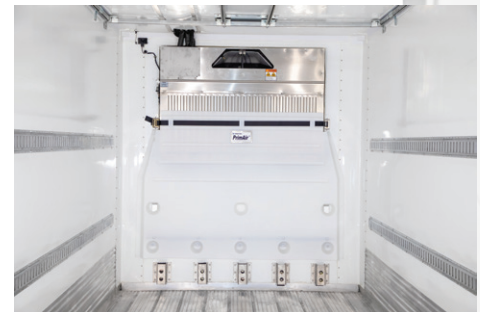
Remote evaporator and moveable bulkhead installed at factory



MULTI-TEMPERATURE CAPABILITIES

PureBlue trailer is available with multi-temperature capabilities, allowing you to customize to manage multiple temperature zones within the trailers. Multiple temperature zones allow fresh and frozen loads to be hauled together, giving your fleet greater flexibility and efficiency.

PureBlue isn't just another refrigerated trailer; it's a proven performance advantage. Independently tested and engineered for superior thermal efficiency, airtight integrity and lighter weight, PureBlue delivers measurable fuel savings, greater payload capacity and long-term durability. From its galvanized components and zero-wood construction to its advanced sealing and safety systems, every detail is designed to protect your cargo and your bottom line. Proudly built in Evansville, Wisconsin.



Air return, pallet stops & electronics installed on interior front wall.



Multiple bulkheads and evaporators create specific temperature zones

PureBlue is tested.
Trusted. Proven.

100% PureBlue™



IT'S IN THE DETAILS



STOUGHTON[®]



ERVIN
ERVINUSA.COM
sales@ervinsa.com
877-873-6863